



CORRIDOR (D)

- Free-span, demountable acoustical ceiling
- Installation on wall angles
- Edge D

CONDITIONS OF USE

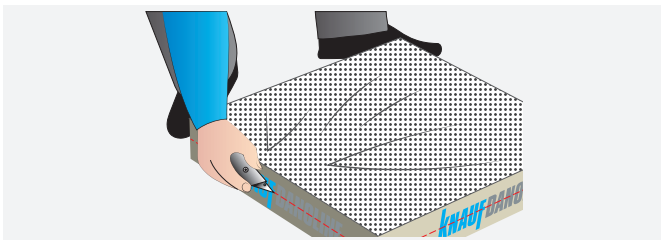
- For internal fitout of buildings
- To be installed in a closed-off building

STORAGE

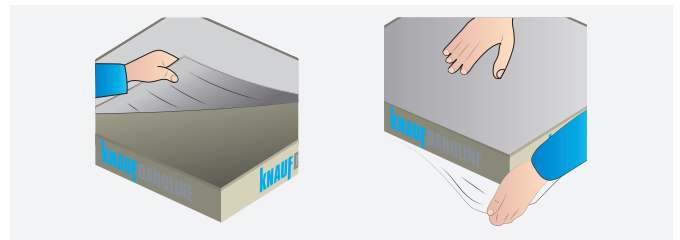
The products must be:

- stored indoors clean and dry
- positioned on a level base
- protected from direct moisture
- stored at humidities of less than 70% RH and temperatures of less than 50°C
- protected from impact and shock
- stacked max. 2 pallets on top of each other

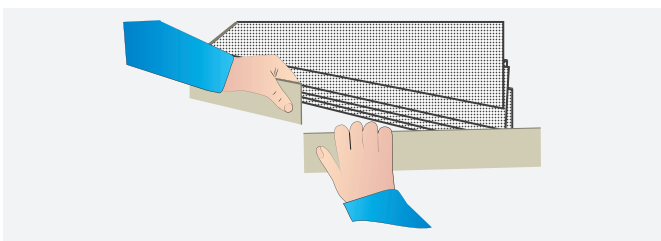
PACKAGING OPENING



- Cut the plastic wrapping by running a knife along the sides of the package. Do not cut the plastic on top of the package.



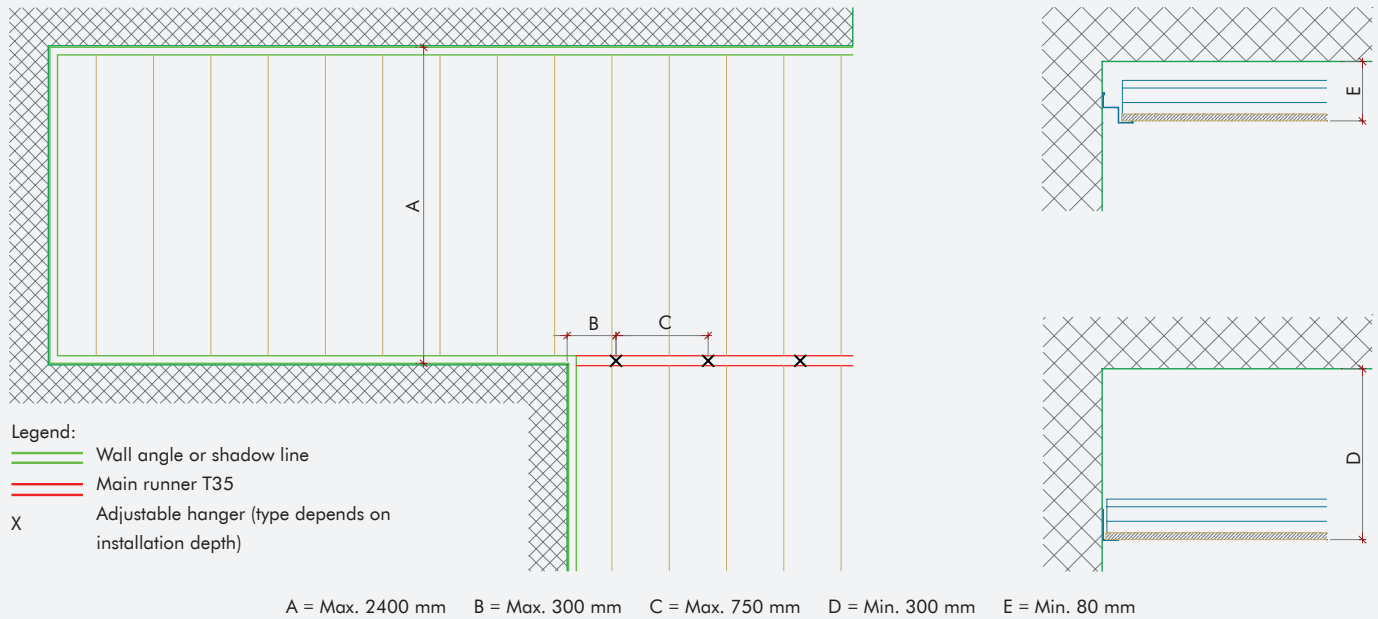
- Remove the plastic wrapping.



- Remove the cardboard liner around the ceiling tiles.


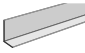

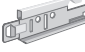
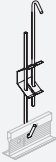

INSTALLATION GUIDE CORRIDOR

CEILING LAYOUT



RECOMMENDED ACCESSORIES

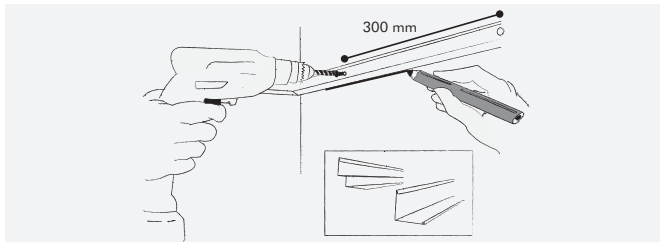
Below accessories are tested and approved for use in connection with Corridor.

	PRODUCT NAME	SAP NO.	W x L x H (mm)
Suspension	 Flex runner	198603 198652 198660	65 x 1194 x 44 65 x 1794 x 44 65 x 2394 x 44
	 Wall angle type MI4020	502754	20 x 3050 x 40
	 Shadow line trim type MS14	316332	20+20x3000/20+20
	 Main runner T35	343273	35 x 3700 x 38
	 Adjustable hanger The size specification indicates the min. and max. range	469861 469868 469872 469876 469878 469880 469881	165 - 280 315 - 580 510 - 970 630 - 1210 755 - 1460 900 - 1750 1020 - 1990
Extra	 Repair kit White paint for preprinted tiles	198956	100 mm NCS 0700

INSTALLATION GUIDE CORRIDOR

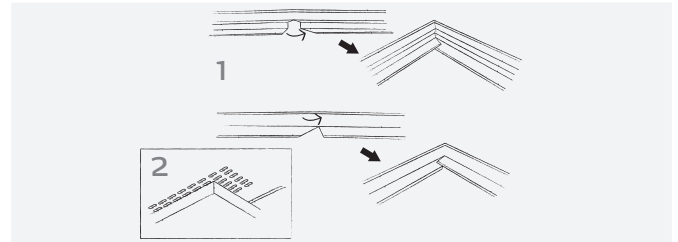
INSTALLATION

Before installation, please ensure that fixtures to primary construction can withstand the load of the ceiling.
Best Practice: Use of clean cotton gloves when handling product tiles will ensure a good result and a ceiling without fingermarks.



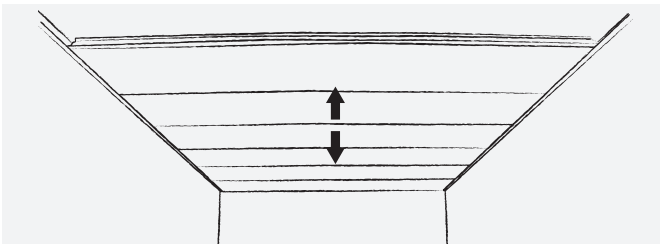
WALL ANGLES

- Mark the location of the wall angles on the walls and columns in relation to the required ceiling height.
- Install wall angle or shadow line trim at max. 300 mm. Choose fittings in accordance with the substrate.
- Please note that Corridor 400 requires heavy duty wall angles or shadow line trims with metal thickness of minimum 0.7 mm
- The bearing contact surface of the wall angle / shadow line trim must be at least 20 mm.



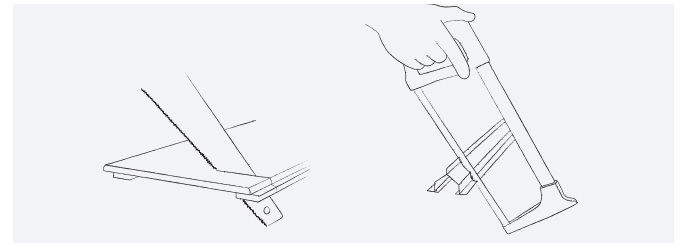
CORNERS

- Inside corners (1): cut the corners in a false mitre letting the ends overlap each other, unless anything to the contrary is specified.
- Outside corners (2): must always be mitred.



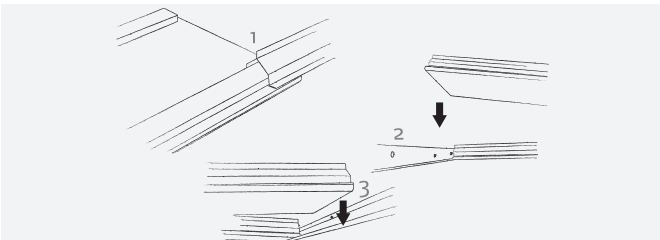
CEILING LAYOUT

- Divide the ceiling surface from the centre of the room or in accordance with the existing ceiling plans.



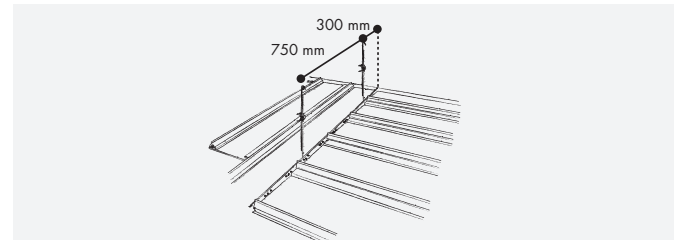
CUTTING

- Always wear clean cotton gloves when handling elements.
- Cut the elements to size from the front with a fine-toothed saw. Elements must be 3-8 mm undersized according to tight measure.
- Adjust the lengths of the profiles with a hacksaw or a circular power saw with a special blade, max. 10 mm shorter than the ceiling element.



INSTALLATION

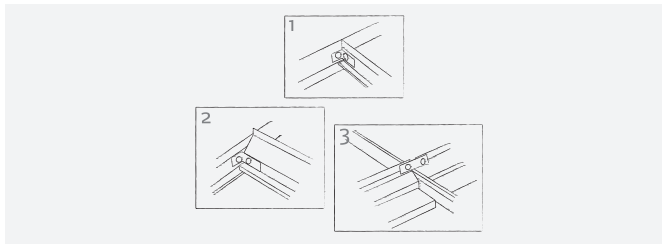
- Always wear clean cotton gloves when handling elements.
- Push the flex runner over the gypsum runner before installation (1).
- Place the elements in position on the wall angle and push them close together (2 and 3).
- Recommended minimum installation height: when using wall angles, 300 mm, when using shadow line trims, 85 mm.



CHANGE OF DIRECTION AND NICHES

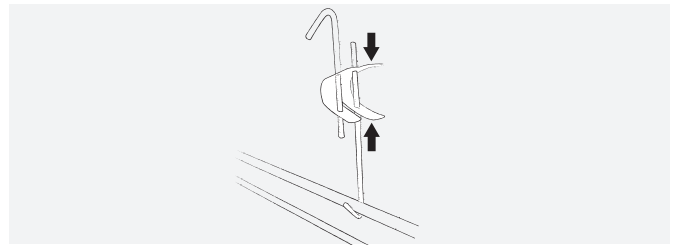
- Use Knauf Danoline T-profiles type T35 (35 mm wide) supported by hangers when changing directions and in connection with niches.
- Install the first hanger max. 300 mm from the wall. Other hangers should be installed at max. 750 mm c/c.

INSTALLATION GUIDE CORRIDOR



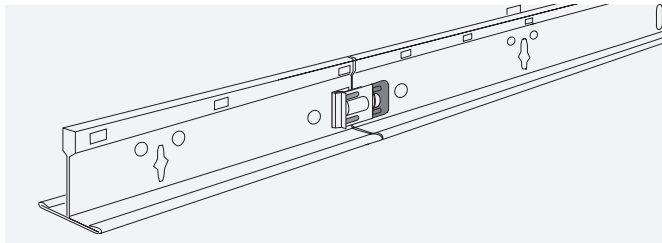
JOINING ELEMENTS IN T-PROFILES

- Secure the T-profile to the wall construction with an angle. (1)
- At least every 4th element resting on the T-profile should be secured against sliding using an angle or band iron at both ends. (2)(3)



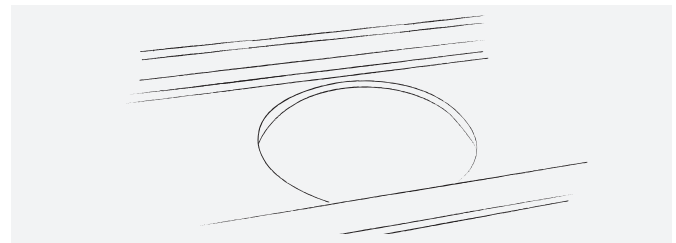
HANGERS (IF T-PROFILES ARE USED FOR THE CEILING)

- Fix adjustable hangers (1) with eye screws or similar securely fastened to the primary construction.
- Install the first hanger at max. 300 mm from the wall. The other hangers should be installed at max. 750 mm c/c.
- If loads from light fittings etc. are to be borne by the ceiling, install additional hangers.
- Refer to distances in figure 1.



T-PROFILES

- Join the main runners longitudinally by clicking them together.
- Adjust the lengths of the profiles with metal shears, a hacksaw or a circular power saw with a special blade.
- Make sure there is a hanger between the end joints of the main runners and the fire break.
- The T-profile must be fixed to the wall construction.



FIXTURES AND FITTINGS

- Units weighing up to 3kg can be installed directly into the panel without reinforcement.
- N.B. The maximum cut-out, when installing in the centre of the panel is $\text{Ø}265 \text{ mm} / 265 \times 26 \text{ 5mm}$.
- Units over 3kg, should be supported independently, so that they do not place any load on the ceiling.